



GMT MONTHLY MEMBERSHIP PROGRESS REPORT

Results as of: 4/30/2024

Multiple District 16

LOCATION: NEW JERSEY

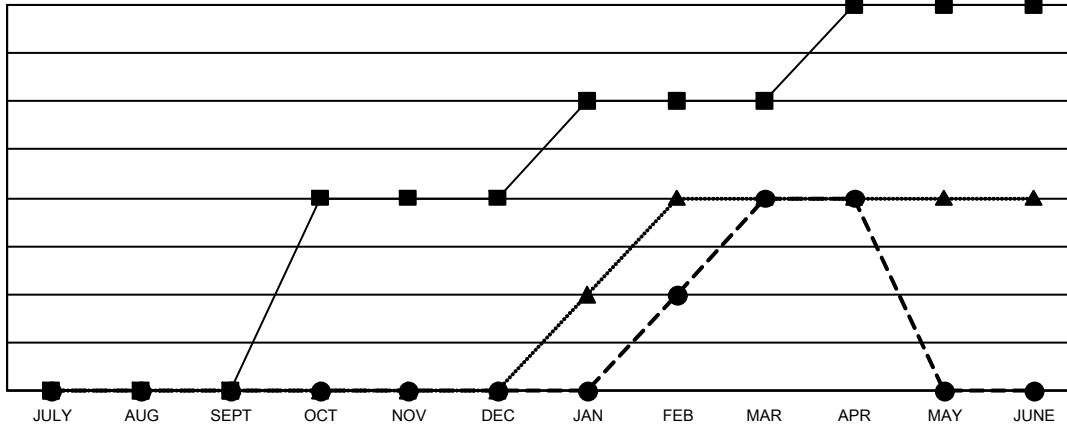
GMT: OPEN

GMT CA 1

Clubs			
RESULTS FOR 2023-2024			
QUARTER	NEW CLUB GOAL	NEW CLUBS	DROPPED CLUBS
JULY/AUG/SEPT	0	0	2
OCT/NOV/DEC	2	0	4
JAN/FEB/MAR	1	2	2
APR/MAY/JUNE	1	0	0

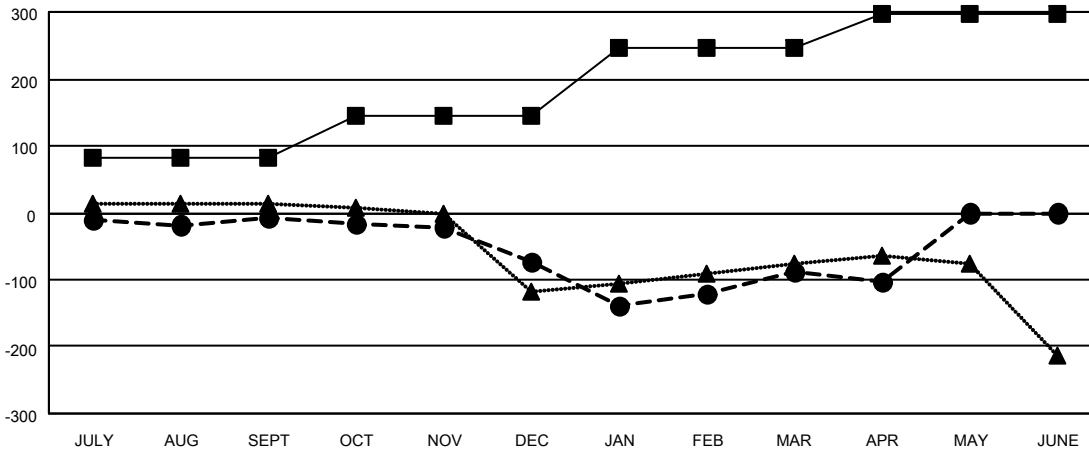
Members			
RESULTS FOR 2023-2024			
QUARTER	MEMBER GROWTH NET GOAL	MEMBER GROWTH ACTUAL	DROPPED MEMBERS ACTUAL (including transfers)
JULY/AUG/SEPT	82	117	105
OCT/NOV/DEC	62	100	148
JAN/FEB/MAR	102	147	137
APR/MAY/JUNE	52	23	31

GOALS AND ACTUAL NEW CLUBS CUMULATIVE



- - CURRENT YEAR GOALS FOR NEW CLUBS
- - CURRENT YEAR ACTUAL NEW CLUBS
- ▲ - LAST YEAR ACTUAL NEW CLUBS

GOALS AND ACTUAL MEMBERS CUMULATIVE



- - MEMBER GROWTH NET GOAL
- - MEMBER GROWTH ACTUAL
- ▲ - LAST YEAR MEMBERSHIP ACTUAL

DROPPED CLUBS: 8	77 CLUBS OF 163 ADDED 1 OR MORE NEW MEMBERS	GENDER DISTRIBUTION
		MALE 2,425 (64.53%)
		FEMALE 1,333 (35.47%)
DROPPED MEMBERS	CLICK HERE FOR CUMULATIVE MEMBERSHIP DATA	TOTAL FAMILY UNIT MEMBERS 737
DECEASED 39		FAMILY MEMBERS PAYING HALF DUES 387
CLUB CANCELLED 81		
OTHER 301		
TOTAL 421		